



ALS Canada Ltd.
2103 Dollarton Hwy
North Vancouver BC V7H 0A7
Phone: 604 984 0221 Fax: 604 984 0218 www.alsglobal.com

To: KAMINAK GOLD CORPORATION
1020 - 800 WEST PENDER STREET
VANCOUVER BC V6C 2V6

Page: 1
Finalized Date: 5-JUN-2012
This copy reported on
2-NOV-2012
Account: KAMGOL

CERTIFICATE WH12119552

Project: Coffee

P.O. No.: KGC-12-1284

This report is for 60 Drill Core samples submitted to our lab in Whitehorse, YT, Canada on 28-MAY-2012.

The following have access to data associated with this certificate:

TOM BOKENFOHR

JAMES SCOTT

TIM SMITH

SAMPLE PREPARATION

ALS CODE	DESCRIPTION
LOG-21	Sample logging - ClientBarCode
WEI-21	Received Sample Weight
SPLIT-Z	Pulp split for send out
LOG-23	Pulp Login - Rcvd with Barcode
CRU-QC	Crushing QC Test
CRU-31	Fine crushing - 70% <2mm
PUL-QC	Pulverizing QC Test
SPL-21	Split sample - riffle splitter
PUL-31	Pulverize split to 85% <75 um

ANALYTICAL PROCEDURES

ALS CODE	DESCRIPTION	INSTRUMENT
Au-ICP21	Au 30g FA ICP-AES Finish	ICP-AES
ME-ICP41	35 Element Aqua Regia ICP-AES	ICP-AES

To: KAMINAK GOLD CORPORATION
ATTN: ALS MINERALS

This is the Final Report and supersedes any preliminary report with this certificate number. Results apply to samples as submitted. All pages of this report have been checked and approved for release.

Signature:


Colin Ramshaw, Vancouver Laboratory Manager



ALS Canada Ltd.
2103 Dollarton Hwy
North Vancouver BC V7H 0A7
Phone: 604 984 0221 Fax: 604 984 0218 www.alsglobal.com

To: KAMINAK GOLD CORPORATION
1020 - 800 WEST PENDER STREET
VANCOUVER BC V6C 2V6

Page: 2 - A
Total # Pages: 3 (A - C)
Finalized Date: 5-JUN-2012
Account: KAMGOL

Project: Coffee

CERTIFICATE OF ANALYSIS WH12119552

Sample Description	Method Analyte Units LOR	WEI-21 Recvd Wt. kg	Au-ICP21 Au ppm	ME-ICP41 Ag ppm	ME-ICP41 Al %	ME-ICP41 As ppm	ME-ICP41 B ppm	ME-ICP41 Ba ppm	ME-ICP41 Be ppm	ME-ICP41 Bi ppm	ME-ICP41 Ca %	ME-ICP41 Cd ppm	ME-ICP41 Co ppm	ME-ICP41 Cr ppm	ME-ICP41 Cu ppm	ME-ICP41 Fe %
		0.02	0.001	0.2	0.01	2	10	10	0.5	2	0.01	0.5	1	1	1	0.01
KAM082511		1.94	0.004	<0.2	2.32	25	<10	160	0.8	2	1.79	<0.5	9	13	9	2.46
KAM082512		1.37	0.010	<0.2	1.53	47	<10	60	0.6	2	2.08	<0.5	5	9	13	1.80
KAM082513		1.67	0.002	<0.2	1.42	21	<10	60	0.8	<2	1.58	<0.5	4	5	3	2.20
KAM082514		1.51	0.001	<0.2	1.85	4	<10	70	0.9	<2	2.52	<0.5	5	5	4	2.56
KAM082515		1.76	0.002	<0.2	1.15	3	<10	60	0.5	<2	0.56	<0.5	4	7	7	2.10
KAM082516		1.99	0.001	<0.2	1.11	<2	<10	60	0.5	3	0.58	<0.5	3	7	4	1.70
KAM082517		1.30	0.002	<0.2	1.03	2	<10	50	0.5	2	0.43	<0.5	4	7	11	1.86
KAM082518		1.98	0.001	<0.2	0.93	2	<10	50	<0.5	3	1.58	<0.5	4	6	6	1.79
KAM082519		1.60	<0.001	<0.2	1.04	<2	<10	50	0.5	2	0.33	<0.5	5	6	7	1.85
KAM082520		0.03	0.002	0.4	1.68	4	<10	90	<0.5	<2	0.89	<0.5	9	29	24	2.48
KAM082521		1.19	0.001	<0.2	1.87	2	<10	90	0.9	2	0.64	<0.5	9	41	3	2.30
KAM082522		1.12	0.002	<0.2	1.19	2	<10	50	0.7	2	0.94	<0.5	4	10	8	1.82
KAM082523		0.94	0.001	<0.2	1.22	13	<10	40	0.7	<2	0.74	<0.5	4	17	9	1.93
KAM082524		2.10	0.001	0.2	0.77	2	<10	70	0.5	<2	0.56	<0.5	5	9	5	1.68
KAM082525		1.87	<0.001	<0.2	0.96	2	<10	60	<0.5	2	0.75	<0.5	5	15	4	1.86
KAM082526		1.81	<0.001	<0.2	1.08	<2	<10	80	<0.5	<2	0.77	<0.5	5	9	6	1.85
KAM082527		1.47	0.001	0.2	1.27	2	<10	50	0.6	<2	0.56	<0.5	5	7	6	1.74
KAM082528		1.78	0.001	<0.2	0.97	3	<10	40	<0.5	<2	0.62	<0.5	4	8	3	1.89
KAM082529		1.35	0.001	<0.2	1.26	3	<10	60	0.6	<2	0.70	<0.5	4	5	4	1.81
KAM082530		0.04	2.69	0.6	1.15	6	<10	100	<0.5	<2	0.78	<0.5	9	39	38	2.60
KAM082531		1.68	0.001	<0.2	1.19	12	<10	60	0.7	2	2.93	<0.5	4	4	6	1.79
KAM082532		1.58	0.001	<0.2	1.27	3	<10	60	0.6	2	0.88	<0.5	4	5	4	1.75
KAM082533		1.63	0.002	<0.2	0.87	13	<10	50	0.5	<2	0.78	<0.5	4	4	7	1.44
KAM082534		1.29	<0.001	<0.2	1.06	39	<10	30	0.8	<2	2.69	<0.5	2	2	6	1.16
KAM082535		1.67	<0.001	<0.2	1.24	9	<10	50	0.7	2	0.68	<0.5	4	5	10	1.93
KAM082536		1.58	<0.001	<0.2	0.89	9	<10	70	0.6	<2	0.64	<0.5	3	4	5	1.73
KAM082537		1.97	<0.001	<0.2	0.99	<2	<10	50	0.5	<2	0.70	<0.5	4	8	5	1.87
KAM082538		1.92	<0.001	<0.2	1.39	2	<10	50	0.7	<2	0.80	<0.5	6	17	6	2.15
KAM082539		1.57	<0.001	<0.2	0.93	<2	<10	50	0.6	2	0.41	<0.5	4	7	8	1.98
KAM082540		0.03	<0.001	0.4	1.73	4	<10	90	<0.5	<2	0.91	<0.5	10	29	24	2.58
KAM082541		1.83	<0.001	<0.2	1.19	2	<10	50	0.7	<2	0.96	<0.5	7	26	22	2.21
KAM082542		1.81	<0.001	<0.2	0.97	2	<10	30	0.5	<2	1.30	<0.5	3	5	9	1.57
KAM082543		1.70	<0.001	<0.2	0.91	2	<10	40	<0.5	<2	0.50	<0.5	5	5	15	1.84
KAM082544		1.70	<0.001	<0.2	0.58	3	<10	30	<0.5	<2	0.74	<0.5	3	4	7	1.04
KAM082545		1.40	<0.001	<0.2	0.72	2	<10	40	<0.5	<2	0.47	<0.5	5	6	8	1.53
KAM082546		1.67	<0.001	<0.2	0.73	2	<10	50	<0.5	<2	0.28	<0.5	5	5	10	1.69
KAM082547		1.75	<0.001	<0.2	0.80	4	<10	50	0.5	<2	0.35	<0.5	4	5	8	1.12
KAM082548		1.65	<0.001	<0.2	1.37	5	<10	60	0.9	2	1.74	<0.5	6	12	5	1.62
KAM082549		1.46	<0.001	<0.2	1.24	14	<10	50	1.5	<2	5.16	<0.5	7	18	4	1.94
KAM082550		0.03	5.77	1.1	1.43	35	<10	200	<0.5	<2	0.58	<0.5	8	31	73	3.13



ALS Canada Ltd.
2103 Dollarton Hwy
North Vancouver BC V7H 0A7
Phone: 604 984 0221 Fax: 604 984 0218 www.alsglobal.com

To: KAMINAK GOLD CORPORATION
1020 - 800 WEST PENDER STREET
VANCOUVER BC V6C 2V6

Page: 2 - B
Total # Pages: 3 (A - C)
Finalized Date: 5-JUN-2012
Account: KAMGOL

Project: Coffee

CERTIFICATE OF ANALYSIS WH12119552

Sample Description	Method Analyte Units LOR	ME-ICP41	ME-ICP41	ME-ICP41	ME-ICP41	ME-ICP41	ME-ICP41	ME-ICP41	ME-ICP41	ME-ICP41	ME-ICP41	ME-ICP41	ME-ICP41	ME-ICP41	ME-ICP41
		Ga	Hg	K	La	Mg	Mn	Mo	Na	Ni	P	Pb	S	Sb	Sc
		ppm 10	ppm 1	% 0.01	ppm 10	% 0.01	ppm 5	ppm 1	% 0.01	ppm 1	ppm 10	ppm 2	% 0.01	ppm 2	ppm 1
KAM082511		10	<1	0.95	70	0.77	653	2	0.03	8	580	6	0.05	3	3
KAM082512		10	<1	0.61	80	0.49	352	1	0.03	4	420	14	0.08	2	4
KAM082513		10	<1	0.60	60	0.48	359	2	0.04	2	550	10	0.03	2	3
KAM082514		10	<1	0.88	60	0.76	472	1	0.04	2	690	9	0.02	3	3
KAM082515		10	<1	0.63	50	0.42	284	2	0.07	2	420	5	0.11	<2	2
KAM082516		<10	<1	0.56	60	0.38	230	1	0.07	3	350	5	0.09	<2	2
KAM082517		<10	<1	0.45	60	0.41	239	1	0.07	3	330	5	0.07	<2	2
KAM082518		<10	<1	0.32	60	0.36	282	2	0.06	2	320	6	0.27	<2	2
KAM082519		<10	<1	0.35	50	0.45	243	1	0.06	3	320	3	0.29	<2	1
KAM082520		10	<1	0.12	<10	0.75	403	2	0.11	21	590	2	0.22	<2	5
KAM082521		10	<1	0.91	40	1.29	350	1	0.06	22	440	4	0.34	2	4
KAM082522		10	<1	0.51	50	0.53	300	1	0.07	6	340	4	1.31	<2	2
KAM082523		10	<1	0.37	50	0.61	253	1	0.06	8	360	6	0.12	3	2
KAM082524		<10	<1	0.38	50	0.41	199	1	0.08	5	320	4	0.82	2	2
KAM082525		<10	<1	0.45	40	0.53	240	1	0.09	6	320	3	0.62	<2	2
KAM082526		<10	<1	0.56	50	0.54	347	1	0.08	5	340	5	0.48	<2	2
KAM082527		<10	<1	0.41	50	0.54	324	2	0.06	4	340	3	0.08	4	2
KAM082528		10	<1	0.27	60	0.47	245	2	0.08	3	340	3	0.35	2	2
KAM082529		<10	<1	0.46	60	0.48	295	1	0.06	2	360	3	0.20	2	2
KAM082530		<10	<1	0.09	10	0.54	397	5	0.09	27	490	8	0.20	3	4
KAM082531		<10	<1	0.45	70	0.40	368	1	0.06	3	330	7	0.29	3	2
KAM082532		<10	<1	0.48	60	0.39	252	1	0.06	3	390	4	0.31	2	2
KAM082533		<10	<1	0.36	60	0.25	202	2	0.07	2	310	5	0.29	<2	2
KAM082534		<10	<1	0.23	80	0.25	204	2	0.04	1	290	5	0.07	2	1
KAM082535		<10	<1	0.41	60	0.42	219	1	0.06	2	360	6	0.23	<2	2
KAM082536		<10	<1	0.40	60	0.31	182	2	0.06	2	280	10	0.24	2	1
KAM082537		10	<1	0.42	60	0.47	219	2	0.08	3	340	4	0.21	2	3
KAM082538		10	<1	0.59	60	0.79	288	2	0.07	6	420	4	0.12	4	3
KAM082539		10	<1	0.41	50	0.39	180	3	0.07	2	330	6	0.36	2	2
KAM082540		10	<1	0.13	<10	0.78	414	3	0.11	22	620	3	0.07	<2	5
KAM082541		10	<1	0.55	60	0.61	289	6	0.07	3	310	4	0.32	2	3
KAM082542		<10	<1	0.20	50	0.38	241	6	0.08	2	310	3	0.11	<2	2
KAM082543		10	<1	0.24	50	0.45	263	8	0.05	11	280	5	0.09	<2	1
KAM082544		<10	<1	0.20	30	0.23	174	2	0.05	6	120	3	0.05	2	1
KAM082545		<10	<1	0.20	50	0.35	158	3	0.05	5	330	<2	0.18	<2	2
KAM082546		<10	<1	0.24	50	0.35	125	3	0.05	4	330	3	0.44	<2	2
KAM082547		<10	<1	0.30	40	0.37	136	2	0.05	5	330	<2	0.06	<2	1
KAM082548		<10	<1	0.33	50	0.74	290	2	0.02	15	420	<2	0.04	<2	2
KAM082549		<10	<1	0.30	40	1.26	606	3	0.02	28	300	4	0.02	3	3
KAM082550		<10	2	0.13	10	0.62	472	557	0.07	28	480	77	0.72	20	3



ALS Canada Ltd.
2103 Dollarton Hwy
North Vancouver BC V7H 0A7
Phone: 604 984 0221 Fax: 604 984 0218 www.alsglobal.com

To: KAMINAK GOLD CORPORATION
1020 - 800 WEST PENDER STREET
VANCOUVER BC V6C 2V6

Page: 2 - C
Total # Pages: 3 (A - C)
Finalized Date: 5-JUN-2012
Account: KAMGOL

Project: Coffee

CERTIFICATE OF ANALYSIS WH12119552

Sample Description	Method Analyte Units LOR	ME-ICP41	ME-ICP41	ME-ICP41	ME-ICP41	ME-ICP41	ME-ICP41	ME-ICP41
		Th	Ti	Ti	U	V	W	Zn
		ppm	%	ppm	ppm	ppm	ppm	ppm
		20	0.01	10	10	1	10	2
KAM082511		30	0.09	<10	<10	15	<10	40
KAM082512		30	0.06	<10	<10	15	<10	31
KAM082513		30	0.06	<10	<10	19	<10	30
KAM082514		30	0.08	<10	<10	23	<10	37
KAM082515		30	0.07	<10	<10	14	<10	25
KAM082516		30	0.06	<10	<10	10	<10	19
KAM082517		30	0.04	<10	<10	10	<10	19
KAM082518		30	0.03	<10	<10	8	<10	14
KAM082519		30	0.03	<10	<10	9	<10	16
KAM082520		<20	0.14	<10	<10	60	20	42
KAM082521		20	0.07	<10	<10	29	<10	30
KAM082522		20	0.05	<10	<10	12	<10	20
KAM082523		30	0.03	<10	<10	17	<10	20
KAM082524		20	0.02	<10	<10	9	<10	13
KAM082525		20	0.05	<10	<10	13	<10	15
KAM082526		30	0.05	<10	<10	9	<10	18
KAM082527		30	0.03	<10	<10	10	<10	19
KAM082528		30	0.02	<10	<10	11	<10	19
KAM082529		30	0.03	<10	<10	9	<10	16
KAM082530		<20	0.11	<10	<10	52	10	46
KAM082531		30	0.03	<10	<10	8	<10	15
KAM082532		30	0.04	<10	<10	8	<10	19
KAM082533		30	0.03	<10	10	8	<10	16
KAM082534		30	0.01	<10	<10	4	<10	8
KAM082535		30	0.03	<10	<10	9	<10	14
KAM082536		30	0.02	<10	<10	8	<10	11
KAM082537		30	0.03	<10	<10	14	<10	17
KAM082538		30	0.05	<10	<10	20	<10	24
KAM082539		30	0.03	<10	<10	12	<10	16
KAM082540		<20	0.14	<10	<10	61	20	44
KAM082541		30	0.05	<10	<10	14	<10	21
KAM082542		30	0.01	<10	<10	8	<10	14
KAM082543		30	0.02	<10	<10	10	<10	23
KAM082544		40	0.01	<10	<10	7	<10	12
KAM082545		30	0.01	<10	<10	9	<10	13
KAM082546		30	0.01	<10	<10	8	<10	13
KAM082547		20	0.02	<10	<10	6	<10	13
KAM082548		20	0.02	<10	<10	12	<10	17
KAM082549		20	0.01	<10	<10	16	<10	20
KAM082550		<20	0.09	<10	<10	48	10	65



ALS Canada Ltd.
2103 Dollarton Hwy
North Vancouver BC V7H 0A7
Phone: 604 984 0221 Fax: 604 984 0218 www.alsglobal.com

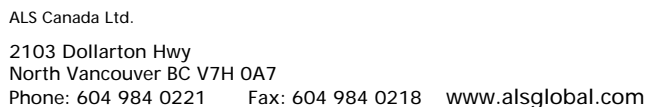
To: KAMINAK GOLD CORPORATION
1020 - 800 WEST PENDER STREET
VANCOUVER BC V6C 2V6

Page: 3 - A
Total # Pages: 3 (A - C)
Finalized Date: 5-JUN-2012
Account: KAMGOL

Project: Coffee

CERTIFICATE OF ANALYSIS WH12119552

Sample Description	Method Analyte Units LOR	WEI-21 Recvd Wt. kg	Au-ICP21 Au ppm	ME-ICP41 Ag ppm	ME-ICP41 Al %	ME-ICP41 As ppm	ME-ICP41 B ppm	ME-ICP41 Ba ppm	ME-ICP41 Be ppm	ME-ICP41 Bi ppm	ME-ICP41 Ca %	ME-ICP41 Cd ppm	ME-ICP41 Co ppm	ME-ICP41 Cr ppm	ME-ICP41 Cu ppm	ME-ICP41 Fe %
		0.02	0.001	0.2	0.01	2	10	10	0.5	2	0.01	0.5	1	1	1	0.01
KAM082551		1.71	0.001	<0.2	2.25	4	<10	130	1.0	<2	1.01	<0.5	10	51	5	2.27
KAM082552		1.79	<0.001	<0.2	2.20	8	<10	160	1.2	3	1.98	<0.5	13	96	12	3.02
KAM082553		1.80	<0.001	<0.2	1.67	5	<10	110	1.1	2	2.36	<0.5	12	50	5	2.29
KAM082554		1.46	<0.001	<0.2	2.96	6	<10	260	1.1	3	3.10	<0.5	17	185	19	3.42
KAM082555		1.73	<0.001	<0.2	2.15	5	<10	220	0.8	2	3.47	<0.5	34	242	43	2.78
KAM082556		1.79	<0.001	<0.2	1.58	13	<10	60	0.8	2	4.57	<0.5	55	193	100	2.80
KAM082557		1.79	<0.001	<0.2	1.24	4	<10	80	0.6	2	2.11	<0.5	19	128	31	1.84
KAM082558		1.80	<0.001	<0.2	2.05	3	<10	180	0.7	<2	1.95	<0.5	14	154	14	2.58
KAM082559		1.74	<0.001	<0.2	2.36	<2	<10	220	0.6	2	2.54	<0.5	16	77	14	2.75
KAM082560		0.03	<0.001	0.2	1.57	6	<10	90	<0.5	<2	0.83	<0.5	10	28	22	2.37
KAM082561		2.06	<0.001	<0.2	2.05	2	<10	200	0.6	<2	2.02	<0.5	18	108	50	2.76
KAM082562		1.67	<0.001	<0.2	0.71	3	<10	30	<0.5	2	0.73	<0.5	6	6	4	1.18
KAM082563		1.75	<0.001	<0.2	1.76	3	<10	150	0.5	3	1.81	<0.5	12	29	18	2.71
KAM082564		1.72	<0.001	<0.2	0.99	3	<10	70	<0.5	2	1.11	<0.5	8	21	28	1.65
KAM082565		1.59	<0.001	<0.2	1.95	6	<10	120	0.8	<2	1.73	<0.5	15	59	9	2.96
KAM082566		1.74	<0.001	<0.2	0.64	5	<10	20	<0.5	2	0.64	<0.5	6	6	4	1.32
KAM082567		1.74	<0.001	<0.2	1.80	5	<10	100	1.1	2	0.74	<0.5	10	65	3	2.37
KAM082568		0.87	<0.001	<0.2	0.49	4	<10	30	0.5	<2	1.53	<0.5	5	4	3	1.48
KAM082569		1.88	<0.001	<0.2	3.07	7	<10	170	1.7	2	3.50	<0.5	18	155	1	3.38
KAM082570		0.03	0.797	0.4	1.59	6	<10	140	<0.5	<2	0.85	<0.5	13	34	42	3.00



Page: 3 - B
Total # Pages: 3 (A - C)
Finalized Date: 5-JUN-2012
Account: KAMGOL

CERTIFICATE OF ANALYSIS WH12119552

[illegible]



2103 Dollarton Hwy
North Vancouver BC V7H 0A7
Phone: 604 984 0221 Fax: 604 984 0218 www.alsglobal.com

**TO: KAMINAK GOLD CORPORATION
1020 - 800 WEST PENDER STREET
VANCOUVER BC V6C 2V6**

Page: 3 - C
Total # Pages: 3 (A - C)
Finalized Date: 5-JUN-2012
Account: KAMGOL

Project: Coffee

CERTIFICATE OF ANALYSIS WH12119552

Sample Description	Method Analyte Units LOR	ME-ICP41	ME-ICP41	ME-ICP41	ME-ICP41	ME-ICP41	ME-ICP41
		Th	Ti	Ti	U	V	W
		ppm	%	ppm	ppm	ppm	ppm
		20	0.01	10	10	1	10
KAM082551		20	0.07	<10	<10	29	<10
KAM082552		20	0.07	<10	<10	46	<10
KAM082553		20	0.04	<10	<10	25	<10
KAM082554		<20	0.14	<10	<10	63	<10
KAM082555		<20	0.15	<10	<10	56	<10
KAM082556		<20	0.12	<10	<10	42	<10
KAM082557		<20	0.14	<10	<10	32	<10
KAM082558		20	0.16	<10	<10	38	<10
KAM082559		<20	0.24	<10	<10	51	<10
KAM082560		<20	0.13	<10	<10	58	20
KAM082561		<20	0.21	<10	<10	42	<10
KAM082562		30	0.02	<10	<10	13	<10
KAM082563		20	0.08	<10	<10	40	<10
KAM082564		30	0.03	<10	<10	15	<10
KAM082565		20	0.08	<10	<10	40	<10
KAM082566		30	0.01	<10	<10	8	<10
KAM082567		20	0.07	<10	<10	28	<10
KAM082568		30	0.01	<10	<10	8	<10
KAM082569		<20	0.09	<10	<10	54	<10
KAM082570		<20	0.14	<10	<10	60	30